



St. Mary Magdalen Parish  
& St. John Mission

8517 7th Ave SE, Everett, WA 98208

[www.SMMparish.org](http://www.SMMparish.org)

(425) 353-1211



# STEWARDSHIP REPORT

JULY 2022 THROUGH JUNE 2023

“A Christian Steward is one who receives God’s gifts gratefully, cherishes and tends them in a responsible and accountable manner, shares them in justice and love with others, and returns them with increase to the Lord.”

*USCCB Pastoral Letter on Stewardship*

# FROM THE PASTOR

---

It is hard to believe that fiscal 2022-23 has come to a close, and that we have begun a new fiscal year! Saint Mary Magdalen Parish flourished in Fiscal 2022-23 with full recovery of all parish activities. Saint John Mission has also been recovering from Covid, although not as quickly as SMM. The May Mass Counts for SMM reflect a 10% increase in attendance from the pre-Covid levels, while those from SJM amount to approximately 90% of the pre-Covid levels.

SMM welcomed over 125 Vietnamese families from Our Lady of Hope parish in July 2022, which increased our registered parish families to 2,979. Saint John's total number of registered parishioner households currently stands at 125, a year-over-year decrease mostly attributed to its population's rising average age and the changes that older age brings with it.

During the fiscal year our religious education and sacramental preparation programs served 609 students, more than double the amount of students from the previous year. SMM school enrollment increased to 333, a 7% increase. We celebrated 125 First Communions, 143 Confirmations, and 3 professions of faith. We also had 115 Baptisms, 41 funerals, 22 weddings, and 11 Quinceañeras.

Financial results saw an increase in overall revenues to \$1,673,563 at SMM while total expenses were \$1,718,650 which resulted in an operating loss of \$45,087 and reduced our savings. Saint John Mission overall revenues totalled \$220,975 which was a slight decrease from the previous year and their expenses totalled \$221,062 which resulted in a virtual breakeven for the fiscal year. Additionally SMM reduced the mortgage debt to the Archdiocese by \$202,568, which leaves \$3,579,883 in outstanding loans.

SMM launched the "My Lord & My God: *Now and for the Future*" Stewardship Drive and Capital Campaign this year, with combined goals of (1) raising pledges and donations amounting to \$1.7 million to cover Calendar Year 2024 expenses and (2) to raise \$5.5 million over the next three years, \$3.5 million of which will be used to pay off our outstanding loans with the Archdiocese, with the remaining \$2 million used to fund major maintenance and repair projects. Among these projects are replacement of the school building's heating and ventilation system; upgrades to our modular and portable classrooms; and installation of LED lighting throughout the campus.

SJM's stewardship drive has also commenced, with a goal of \$175,000.

This fall, we met with parishioners regarding the Partners in the Gospel process taking place throughout our Archdiocese. This included a listening session where the concerns, goals, and wishes of parishioners were expressed, in addition to comments on ways we can further invigorate both Saint Mary Magdalen Parish and Saint John Mission.

On behalf of the entire parish, I thank you for generously giving of your time, talent, and treasure. With your continued help, we hope to continue furthering our mission, growing in faith, and improving our community.



Yours in Christ,

**Reverend Hans M. Olson**

Pastor



**RON ENNEKING**  
PA, ADMINISTRATION



**GEORGINA RUIZ**  
ADMIN ASST, STEWARDSHIP



**LORENA OLSEN**  
BOOKKEEPER



**MICHELLE MCINTYRE**  
SECRETARY



**PERLA GALLEGOS**  
RECEPTIONIST



**ALCHEL HATHAWAY**  
CAPITAL CAMPAIGN ADMINISTRATOR



**MAXIM FARRELL**  
PA, ADULT FAITH FORM + LITURGY



**RACHAEL JOHNSON**  
PA, FAITH FORMATION



**EMILY CURRAN**  
PA, YOUTH MINISTRY



**ADRIANA MADERO**  
PA, OUTREACH



**SR. THERESA KIM HANH**  
PA, VIETNAMESE MINISTRY



**CARRIE WRIGHT**  
MUSIC DIRECTOR



**ROCHELLE STALEY**  
FACILITIES MANAGER



**MARDAN MARAAN**  
CUSTODIAL ASSISTANT



**SERGII STOPIN**  
CUSTODIAL ASSISTANT



**KRISTOR CUMMINGS**  
CUSTODIAL ASSISTANT



**JUANA LOPEZ**  
CUSTODIAL ASSISTANT



**BERNADINE MAHAR, Ed.D.**  
SCHOOL PRINCIPAL

*Our Clergy*



REVEREND HANS M. OLSON  
PASTOR



REVEREND RONALD GAJETTAN, HGN  
VICAR



REV. MR. DAVID ALCORTA  
DEACON



REV. MR. PHUOC NGUYEN  
DEACON

## *The Mission of Stewardship*

Our giving is based on our gratitude to God for His gifts. It involves developing a "need to give", rather than "giving to a need." This is for all aspects of Stewardship: Time, Talent, and Treasure.

*Parishioners' offertory pledges help us to accurately plan our budget. We are especially grateful to those who consistently pledge and have increased their offertory giving for the last several years!*



## MINISTRY HANDBOOK

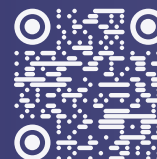
To view Ministry Contacts for St. Mary Magdalen, visit [smparish.org/ministry-handbook](http://smparish.org/ministry-handbook) or scan the QR code here!

*For Saint John Mission's Ministry Contacts, see page 9*



## My Lord & My God: Now and for the Future

STEWARDSHIP DRIVE + CAPITAL CAMPAIGN



*See page 11 for more details or scan the QR code to learn more!*

*If you have questions or comments about our annual Stewardship Report, please feel free to contact Ron Enneking, Pastoral Assistant for Administration, in the Parish Office. You may also contact Mike Simmons, President of the SMM Finance Council, at (206) 250-8907, or Mike Ankrom, President of the SJM Parish Committee, at (425) 258-8957.*

# OFFERTORY REPORT

**2979**  
REGISTERED  
HOUSEHOLDS  
(SMM)

**125**  
REGISTERED  
HOUSEHOLDS  
(SJM)

**604**  
PARISHIONERS  
w/ STEWARDSHIP  
PLEDGE (SMM)

**63**  
PARISHIONERS  
w/ STEWARDSHIP  
PLEDGE (SJM)

**1135**  
PARISHIONERS  
w/ TAX LETTERS  
(SMM)

**83**  
PARISHIONERS  
w/ TAX LETTERS  
(SJM)

**\$903**  
AVERAGE  
ANNUAL GIFT  
(SMM)

**\$1,764**  
AVERAGE  
ANNUAL GIFT  
(SJM)

## *Highlights*

**OUTREACH MINISTRY  
COMBINED (SMM+SJM)**

**112**  
Homebound  
Served

**91**  
Individual  
Anointings

**18**  
Communal  
Anointings

**57**  
Home  
Anointings

**39**  
Outreach  
Volunteers

# FINANCIAL REPORT

FOR FISCAL YEAR ENDING JUNE 30, 2023

**Operating income was \$1,673,563, which is \$171,429 greater than 2022.**

Standard parish collections were \$1,395,701; a \$139,432 growth from 2022.

All other income is \$277,862 or \$31,997 greater than the prior year.

**Total expenses for the year were \$1,718,650, an increase of \$131,988 from 2022.**

Total personnel and benefits were \$1,006,249, which is \$102,872 greater than 2022.

The school subsidy amounts to \$220,000, the same as 2022.

Overall supplies are \$93,628, or \$23,025 greater than 2022.

Utilities are \$65,659, a slight increase of \$1,741 from 2022.

Operations and maintenance are \$79,925, or \$5,687 less than 2022.

The Parish's Archdiocesan Assessments are \$87,771, a minor growth of \$928 from 2022.

All other operating expenses are \$165,418; \$9,109 greater than 2022.

**Net Loss for the year ending June 30, 2023 was \$45,087,**

an improvement of \$39,441 less than 2022.

<b>PARISH OPERATIONS</b> (EXCL. PPP LOAN FORGIVENESS)		Actual 6/30/2023	Actual 6/30/2022
<b>INCOME</b>	Ordinary Income	\$1,395,701	\$1,256,269
	All Other Income	\$277,862	\$245,865
<b>Total Income</b>		<b>\$1,673,563</b>	\$1,502,134
<b>EXPENSES</b>	Personnel & Benefits	\$1,006,249	\$903,377
	School Subsidy	\$220,000	\$220,000
	Supplies	\$93,628	\$70,603
	Utilities	\$65,659	\$63,918
	Operations & Maintenance	\$79,925	\$85,612
	Archdiocesan Assessments	\$87,771	\$86,843
	All Other Expenses	\$165,418	\$156,309
<b>Total Expenses</b>		<b>\$1,718,650</b>	\$1,586,662
<b>Net Operating Loss</b>		<b>(\$45,087)</b>	<b>(\$84,528)</b>

# SMM ANNUAL REPORT

## year ending June 30, 2023

PARISH DEMOGRAPHICS	2023	2022
REGISTERED HOUSEHOLDS	2,979	2,913
PERSONS IN HOUSEHOLDS	8,987	9,299
BAPTISMS	115	94
PROFESSIONS OF FAITH	3	1
FIRST COMMUNIONS	125	117
CONFIRMATIONS	143	98
FUNERALS	34	30
ANOINTINGS OF THE SICK	91	55
MARRIAGES	20	16
QUINCEAÑERAS	11	6

### PARISH LEADERSHIP

PARISH COUNCIL MEMBERS	8
FINANCE COUNCIL MEMBERS	7
SCHOOL COMMISSION MEMBERS	9
LITURGY COMMITTEE MEMBERS	10



### RELIGIOUS EDUCATION

Catechists	
PAID (EMPLOYEES)	3
VOLUNTEERS	30
VOLUNTEER ASSISTANTS	12
Students	
GRADES 1-3	151
GRADES 4-5	253
GRADES 6-8	133
GRADES 9-12	72
CHRISTIAN INITIATION - CHILDREN	24
CHRISTIAN INITIATION - ADULTS	31



### BALANCE SHEET

	Actual 6/30/2023	Actual 6/30/2022	
ASSETS	Checking & Petty Cash	\$87,828	\$52,787
	Construction Checking	\$60,087	\$26,394
	PRF Savings	\$12,091	\$52,370
	PRF Building Fund	\$102,091	\$207,796
	<b>Subtotal Cash</b>	<b>\$262,097</b>	\$339,347
	Accounts Receivable	\$14,716	\$28,656
	Other Current Assets	\$3,620	\$62,404
	Loan Due from School	\$0	\$169,802
	<b>Total Current Assets</b>	<b>\$280,433</b>	\$600,209
	Fixed Assets	\$11,823,732	\$11,619,751
Other Assets	\$15,445	\$16,513	
<b>Total Assets</b>	<b>\$12,119,610</b>	\$12,236,473	
LIABILITIES	Total Current Liabilities	\$84,022	\$84,164
	Church & Gym Remodel	\$0	\$7,006
	PRF Loan - Kitchen	\$0	\$8,908
	PRF Loan - Gym	\$497,595	\$528,253
	PRF Loan - Boiler	\$207,368	\$291,578
	PRF Loan - Church Renovation	\$2,790,898	\$2,869,689
<b>Total Liabilities</b>	<b>\$3,579,883</b>	\$3,789,598	
<b>Equity</b>	<b>\$8,539,727</b>	\$8,446,875	
<b>Total Liabilities and Equity</b>	<b>\$12,119,610</b>	\$12,236,473	



# FINANCIAL REPORT

FOR FISCAL YEAR ENDING JUNE 30, 2023

**Overall income is \$220,975, which is \$1,789 less than year ending June 2022.**

Standard collections are \$168,556; a \$7,191 decrease from the previous year.

All other Income is \$52,419, or \$5,402 greater than the prior year.

**Total expenses for the year were \$221,062, a decrease of \$20,783 from 2022.**

Personnel and Benefits were \$156,983; \$976 less than the previous year.

School Subsidy is \$4,167, or \$20,833 less than 2022.

Maintenance and Repairs were \$15,806, or \$3,663 greater than the previous year.

Supplies were \$2,692, a slight year-over-year decrease of \$335.

Utilities were \$9,814, up \$1,240 from the previous year.

The Archdiocese's assessment of the Mission was \$13,459, or \$1,368 less than 2022.

All other expenses are \$18,141, or \$2,144 less than the previous year.

**Net Loss for the year was \$87; \$18,964 favorable to the previous year.**

**Cash at June 30, 2023 totalled \$26,961; \$1,038 greater than the previous year.**

The Mission has no outstanding debt.

SAINT JOHN MISSION OPERATIONS		Actual 6/30/2023	Actual 6/30/2022
INCOME	Ordinary Income	\$168,556	\$175,747
	All Other Income	\$52,419	\$47,017
Total Income		\$220,975	\$222,764
EXPENSES	Personnel & Benefits	\$156,983	\$157,959
	School Subsidy	\$4,167	\$25,000
	Supplies	\$2,692	\$3,027
	Utilities	\$9,814	\$8,574
	Repairs & Maintenance	\$15,806	\$12,143
	Archdiocesan Assessments	\$13,459	\$14,827
	All Other Expenses	\$18,141	\$20,285
Total Expenses		\$221,062	\$241,815
Net Operating Loss		(\$87)	(\$19,051)



# SJM ANNUAL REPORT

## year ending June 30, 2023



<b>BALANCE SHEET</b>	<b>Actual 6/30/2023</b>	<b>Actual 6/30/2022</b>
Checking & Petty Cash	\$12,127	\$2,002
PRF Savings	\$14,834	\$23,921
<b>Subtotal Cash</b>	<b>\$26,961</b>	\$25,923
Fixed Assets	\$1,081,974	\$1,081,974
Other Assets	\$4,039	\$2,466
<b>Total Assets</b>	<b>\$1,112,974</b>	\$1,110,363
Current Liabilities	\$8,646	\$5,977
Debt	\$0	\$0
<b>Total Liabilities</b>	<b>\$8,646</b>	\$5,977
<b>Equity</b>	<b>\$1,104,328</b>	\$1,104,386
<b>Total Liabilities and Equity</b>	<b>\$1,112,974</b>	\$1,110,363

## Demographics

SAINT JOHN MISSION

<b>125</b>	<b>306</b>	<b>1</b>
Registered Households	Persons in Households	Weekend Masses
<b>7</b>	<b>9</b>	<b>2</b>
Funerals	Anointings	Marriages



<b>SJM MINISTRY CONTACTS</b>		
Sacristans/Readers:	Terry Cox	(425) 513-9673
Servers/EMHCs:	Maxim Farrell	(425) 353-1211, x110
Ushers:	John Stevens	(732) 310-8426
Choir:	Lita Consolacion	(425) 512-8583
Church Cleaning:	Mike Ankrom	(425) 258-8957
Women's Guild:	Ellen Myers	(757) 651-1309
Floral Committee:	Patti Cox	(425) 513-9673
Maintenance Cmte:	Ken Pierson	(206) 234-4806
Parish Council:	Mike Ankrom	(425) 258-8957
SJM Men's Club:	Ron Hughes	(425) 349-9753



## ST. MARY MAGDALEN CATHOLIC SCHOOL

### School Highlights

- Remodel of Bathrooms and Siding (School total: \$227,042; Parish total: \$199,632)
- \$125k+ in grants from Fulcrum & DCYF
- Parents Club involvement throughout the school year with sponsorship of events like Trunk or Treat and Ice Cream Social
- Became fully accredited for a 6-year cycle
- 3% salary increase & fundraising-supported one-time \$146,250 bonus for teachers
- Improved community engagement
- Upgraded technology in every classroom and entire building's IT infrastructure
- A healthy budget focused on sustainability

### Fulfilling Our Mission

- Students altar serving at their weekly Mass
- 333 students were enrolled in 2022-2023, 87% of whom are Catholic
- Approximately 92% of teachers are Catholic
- 7th graders are prepared for the Sacrament of Confirmation in class
- Service Hours Required for 7th + 8th Graders
- Use of Sacred Story and Theology of the Body in religious instruction
- Pastor & Vicar teach various religion classes.
- Received the highest ranking (4) for Mission and Catholic Identity at Accreditation

OPERATIONS (EXCL. PPP LOAN FORGIVENESS)		Actual 6/30/2023	Actual 6/30/2022
REVENUE	Tuition and Fees	\$2,537,751	\$2,364,292
	Fundraising	\$344,486	\$299,154
	Subsidies	\$244,300	\$228,467
	Grants	\$37,500	\$20,492
	All Other Income	\$73,098	\$65,372
Operating Income		\$3,237,135	\$2,977,777
EXPENSES	Personnel & Benefits	\$2,655,719	\$2,067,878
	Ins., Maintenance, Utilities	\$206,955	\$196,343
	All Other Expenses	\$364,741	\$256,359
Total Expenses		\$3,227,415	\$2,520,580
Net Operating Income		\$9,720	\$457,197

BALANCE SHEET		Actual 6/30/2023	Actual 6/30/2022
ASSETS	Checking & Petty Cash	\$195,559	\$397,668
	PRF Savings	\$688,654	\$623,348
	PRF Deferred Maintenance	\$75,390	\$280,824
	Subtotal Check and Savings	\$959,603	\$1,301,840
	Other Current Assets	\$30,219	\$40,469
	Total Current Assets	\$989,822	\$1,342,309
	Endowment Funds	\$1,284,872	\$1,166,248
	Fixed Assets	\$8,137,647	\$7,910,605
Other Assets	\$0	\$36,235	
Total Assets		\$10,412,341	\$10,455,397
LIABILITIES	Renovation Loan Due Parish	\$0	\$169,802
	Outside Custodial Checking	\$14,668	\$36,235
	Diocese Salary Reserve	\$331,433	\$311,433
	Other Current Liabilities	\$145,417	\$72,610
	Subtotal Current Liabilities	\$491,518	\$590,080
	Endowment Funds	\$1,284,877	\$1,166,248
Total Liabilities		\$1,776,395	\$1,756,328
Equity		\$8,635,946	\$8,699,069
Total Liabilities and Equity		\$10,412,341	\$10,455,397



# My Lord & My God: Now and for the Future

STEWARDSHIP DRIVE + CAPITAL CAMPAIGN



As of June 30, 2023, the total parish debt for all projects totals \$3,495,860 with a 30 year mortgage from the Archdiocese at a current interest rate of 2.5%.

In fiscal 2022-23 we reduced our debt by \$202,568. In addition, we paid \$72,220 in interest.

We have pledges and fundraising commitments of \$196,565, as of June 30, 2023. We received \$139,550 in donations and other Capital Campaign fundraising in fiscal 2022-23.

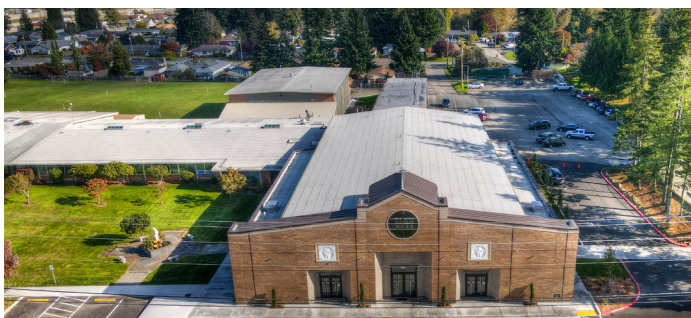
Additionally, we received a \$10,582 rebate from the *Called to Serve* Campaign, and \$81,960 in debt reduction collections from parishioners.

Our current required payment to the Archdiocese is \$15,325 per month (\$183,900 per year).

We have initiated a new capital campaign, entitled *My Lord and My God: Now and for the Future*.

The goal of this campaign is to get pledges and donations of \$5.5 million: \$3.5 million to pay off our loans from the Archdiocese, and \$2 million to fund improvements to the school's portables/modular classrooms and HVAC system, as well as to replace all lights in the school and office with LED energy-saving fixtures/bulbs.

*No matter the total raised, two-thirds will be used to reduce the debt, while the remaining third will fund these new projects.*



## LOAN STATUS REPORT: SMM

June 30, 2023

Church Rebuilding.....	\$2,790,897
Boiler Replacement.....	\$207,368
Gymnasium.....	\$497,595
<b>Total Debt.....</b>	<b>\$3,495,860</b>

## OPEN PLEDGES/COMMITMENTS

Amounts donated in 2022-2023

Capital Campaign.....	\$139,550
Debt Reduction.....	\$81,960
Called to Serve Rebate.....	\$10,582
<b>Total.....</b>	<b>\$232,092</b>

## Goals CAPITAL CAMPAIGN

Goal  
1

**CELEBRATION \$1.5M**

**\$1,000,000:** Loan reduction

**\$500,000:** HVAC

Goal  
2

**CHALLENGE \$3M**

**\$2,000,000:** Loan reduction

**\$1,000,000:** Portable Upgrades, HVAC

Goal  
3

**CHALLENGE PLUS \$4M**

**\$2,700,000:** Loan reduction

**\$1,300,000:** LED Lighting, HVAC, Portable Upgrades

Goal  
4

**TRANSFORMATION \$5.5M**

**\$3,500,000:** Loan paid off

**\$2,000,000:** LEDs, HVAC, Portable Upgrades, Parish Hall Exploration Fund

